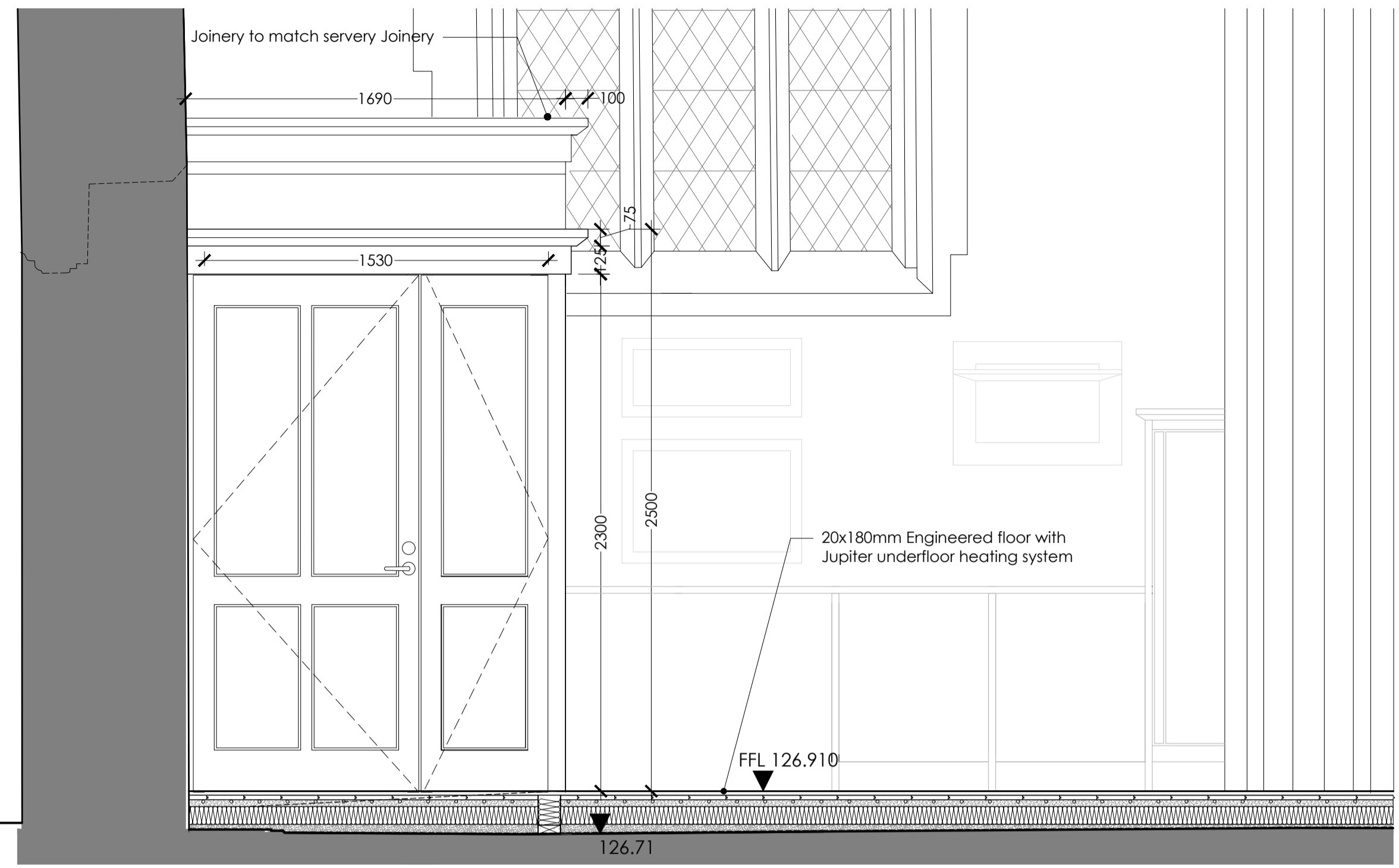
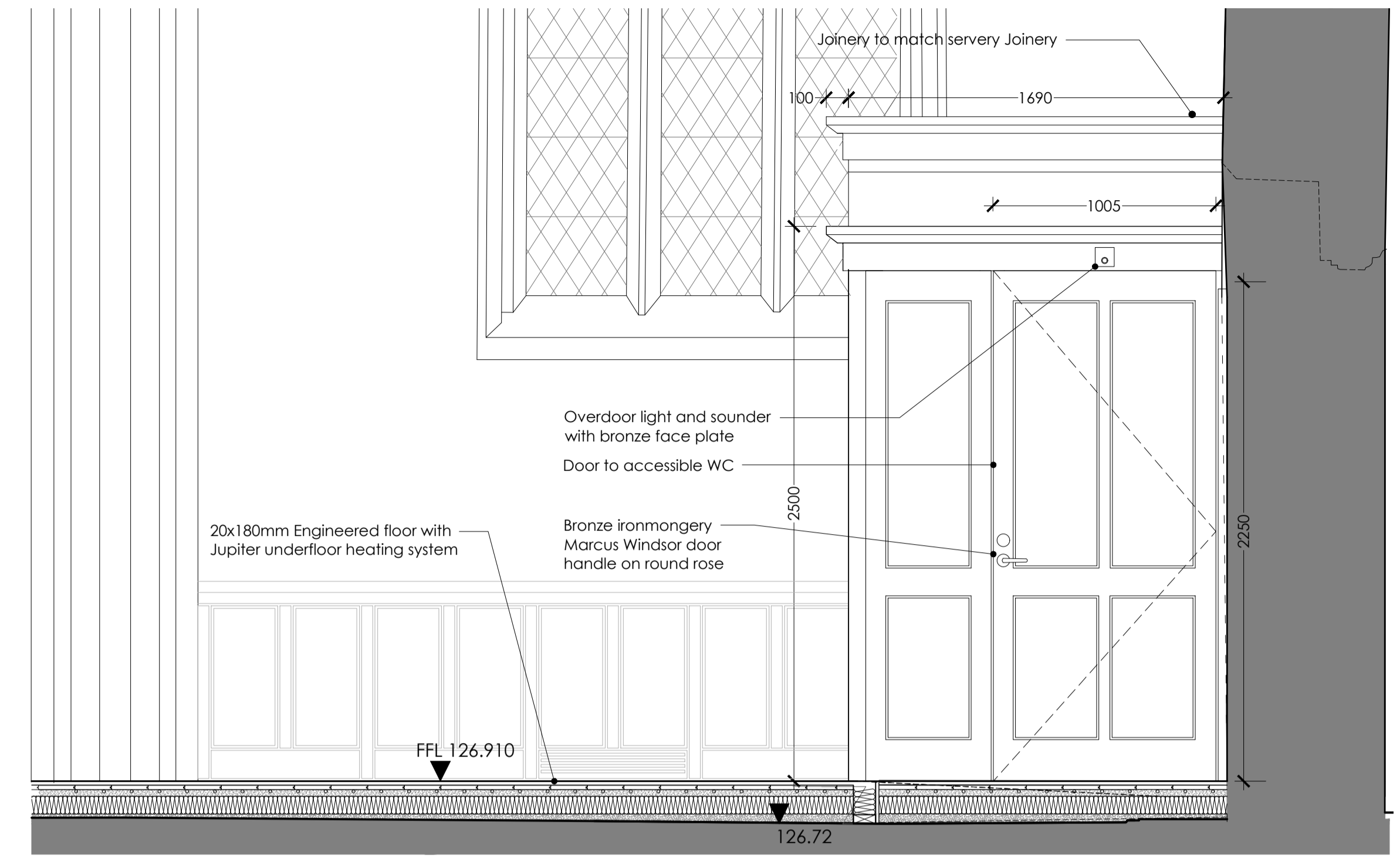


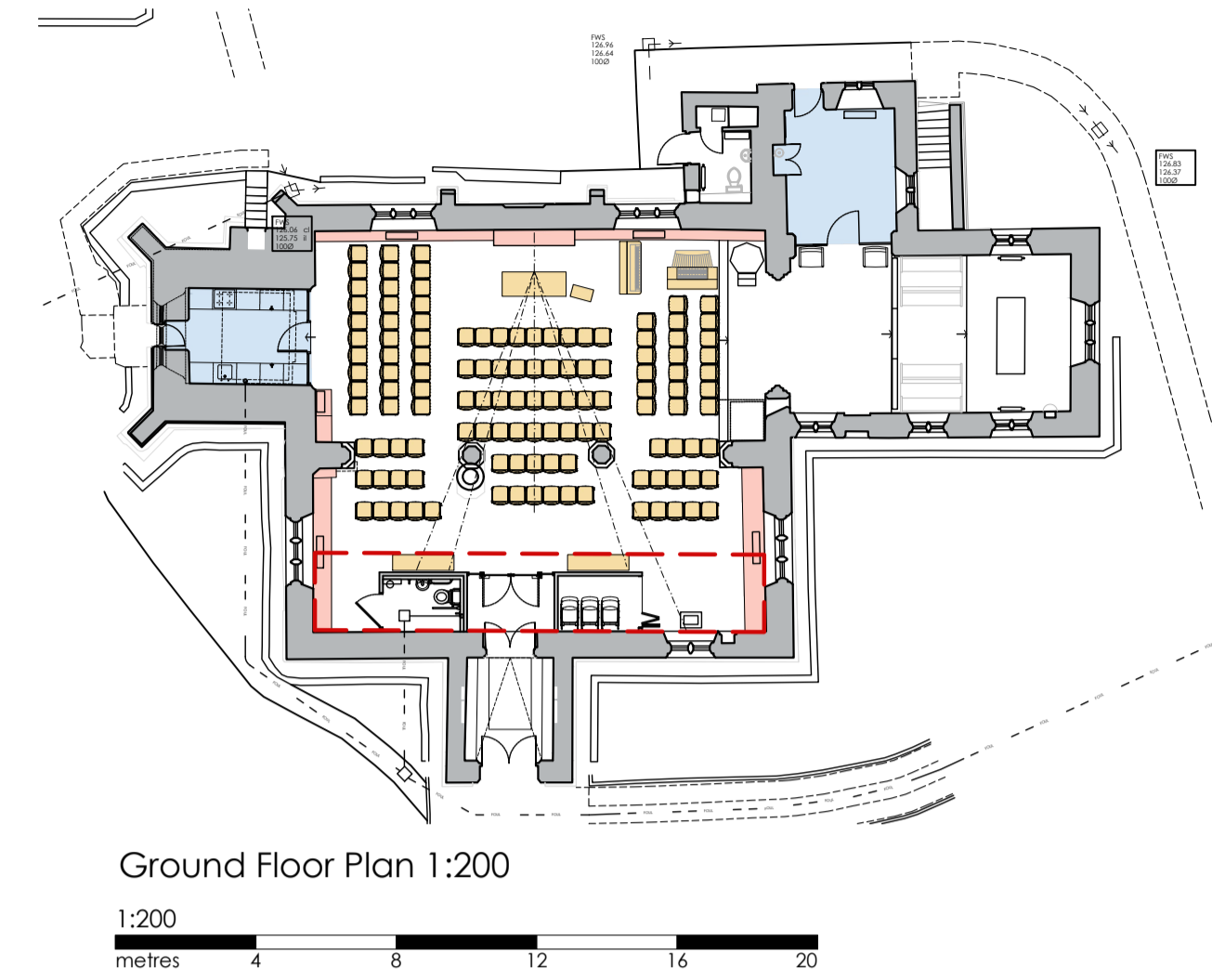
© This Drawing is the copyright of benjamin + beauchamp architects ltd.
 benjamin + beauchamp architects ltd accept no liability for any expense, loss or damage of whatsoever nature and however arising, from any variation made to this drawing, or in the execution of the work to which it relates, which has not been referred to them and their approval obtained.
 P:\Lydiard Millicent - All Saints - 0771\Drawings, Photos & Graphics\B2 Drawings\Drawing Board\0771_WD.010_Lobby Joinery Details_Rev D - .dwg



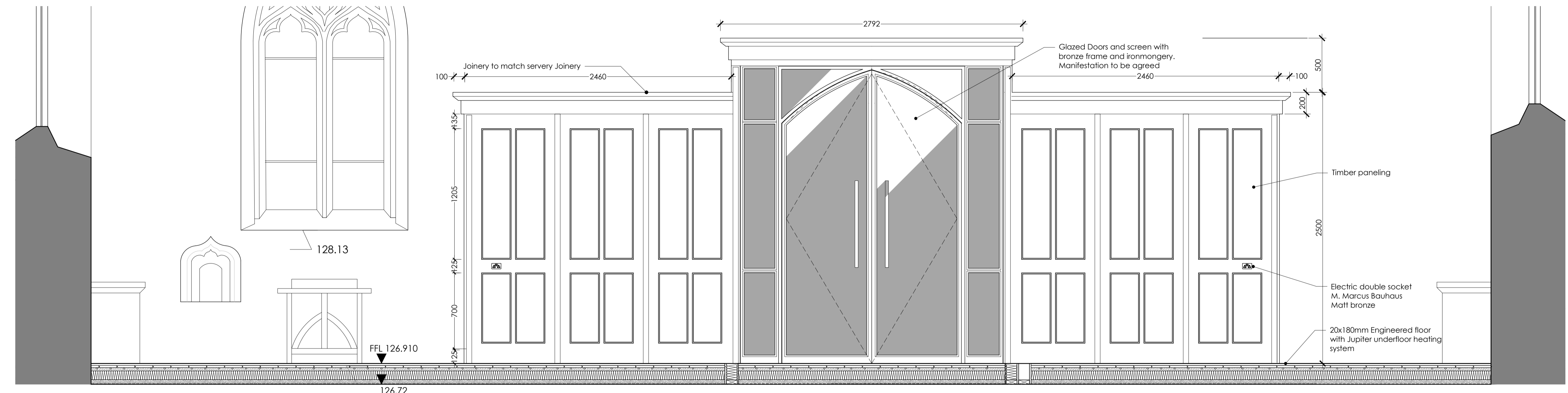
Lobby West Facing Elevation 1:20



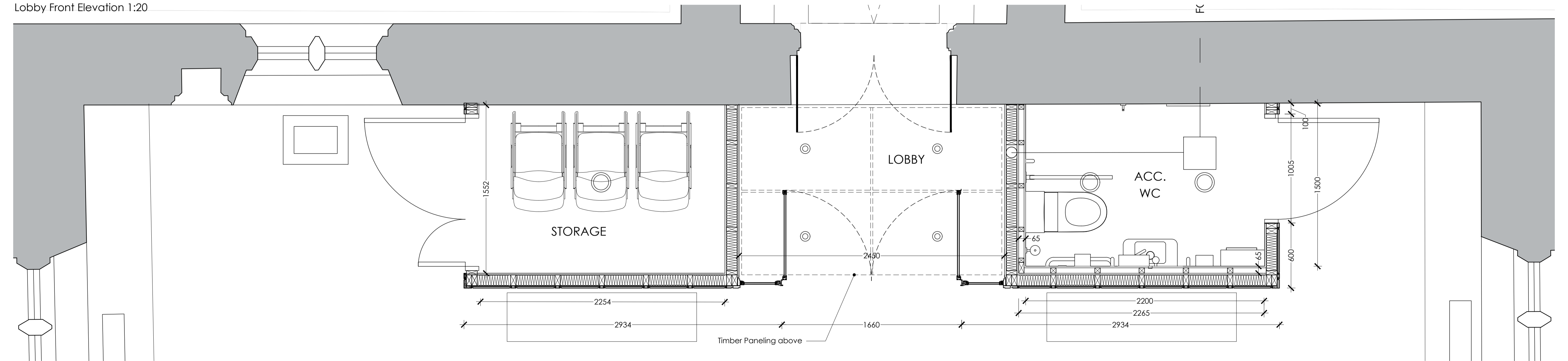
Lobby East Facing Elevation 1:20



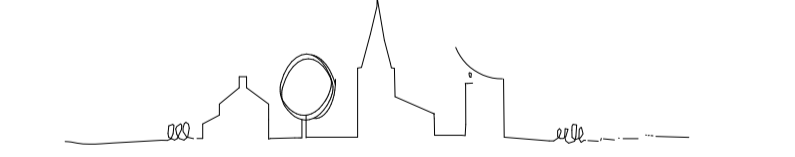
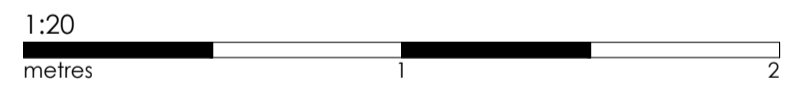
Ground Floor Plan 1:20



Lobby Front Elevation 1:20



Lobby Plan 1:20



Revision	Date	Initials	Notes
D	26/08/22	MM	General revisions for issue to Faculty
C	26/08/22	MM	Floor Detail Revised & W.C Configuration altered
B	02/08/22	rt	Paneling and bronze screen updated
A	29/06/22	mm	Lobby doors changed to open inwards

LYDIARD MILLICENT
All Saints

Title
Lobby Joinery Details
Plan and Elevations

STAGE
FACULTY

benjamin + beauchamp
architecture design conservation
the borough studios, the borough,
wedmore, somerset BS28 4EB
T 01934 713313 F 01934 713314

Drawn By: MM Date: 30/08/22 Scale: 1:20
Drawing No: 0771.WD.010 rev D