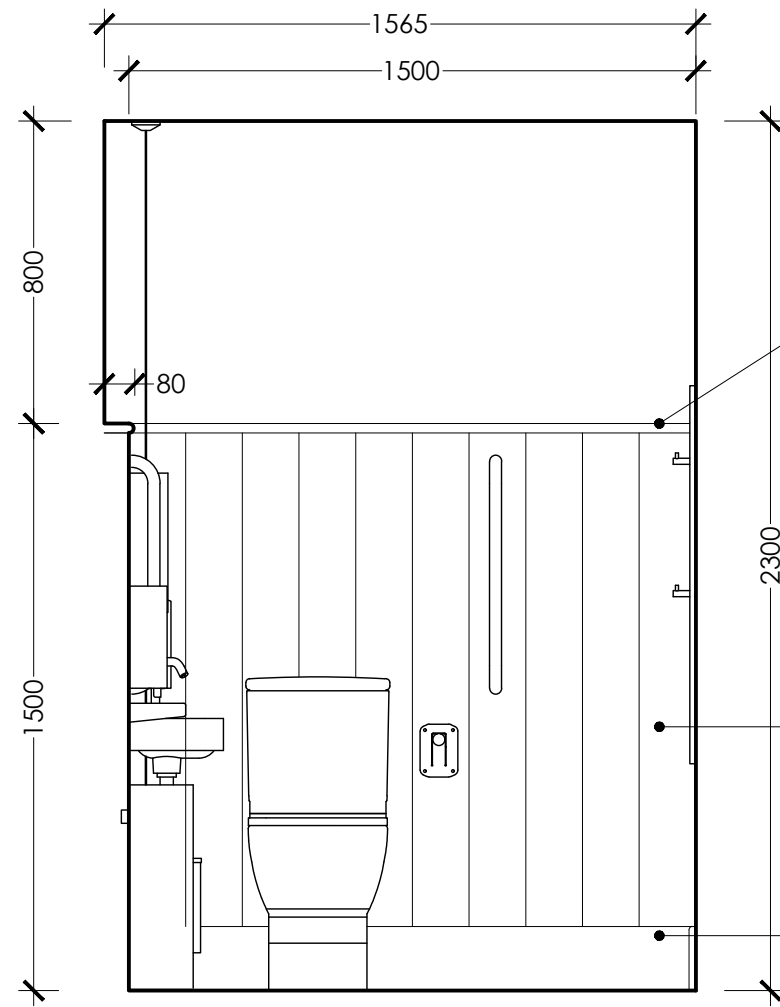
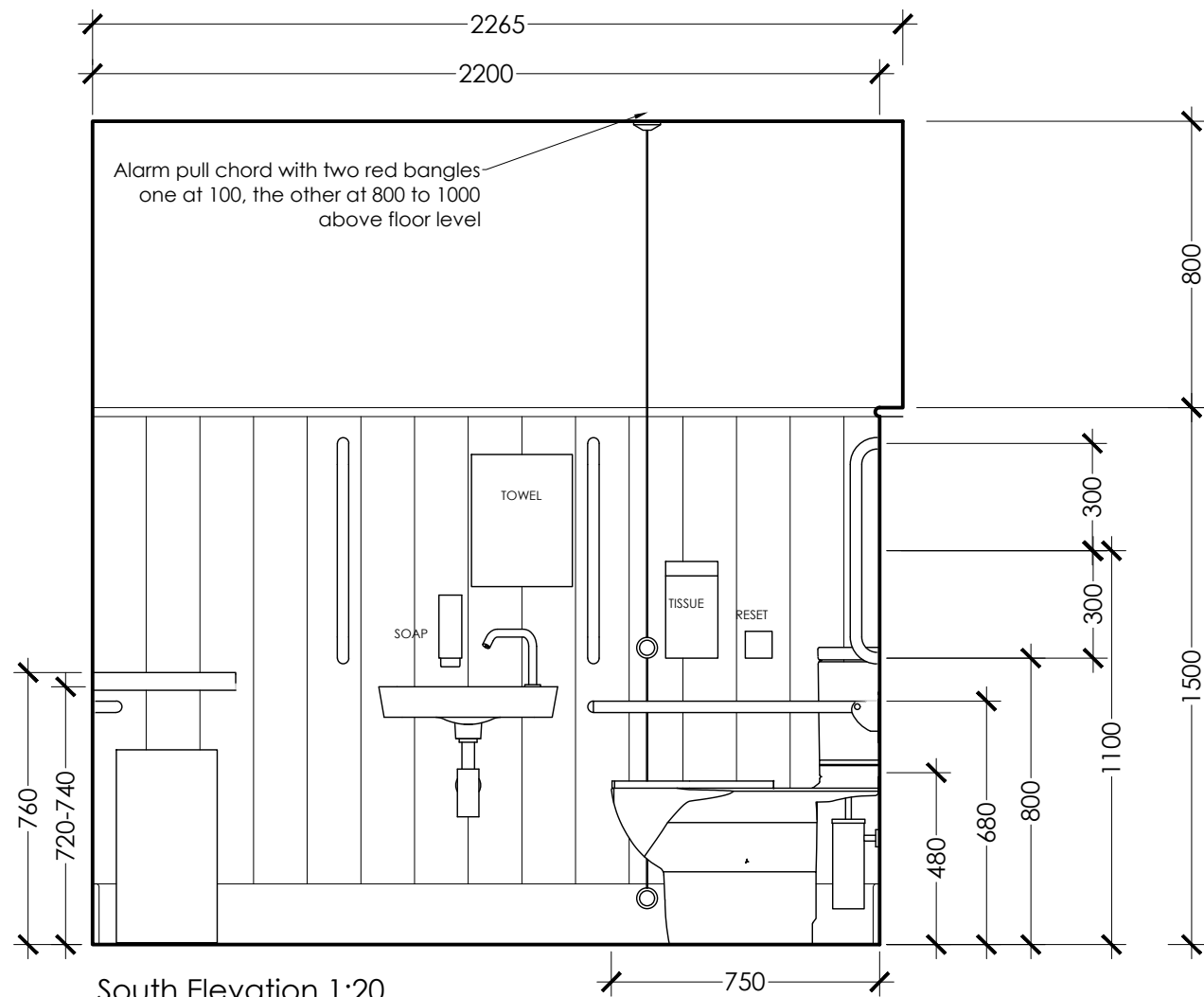


North Elevation 1:20

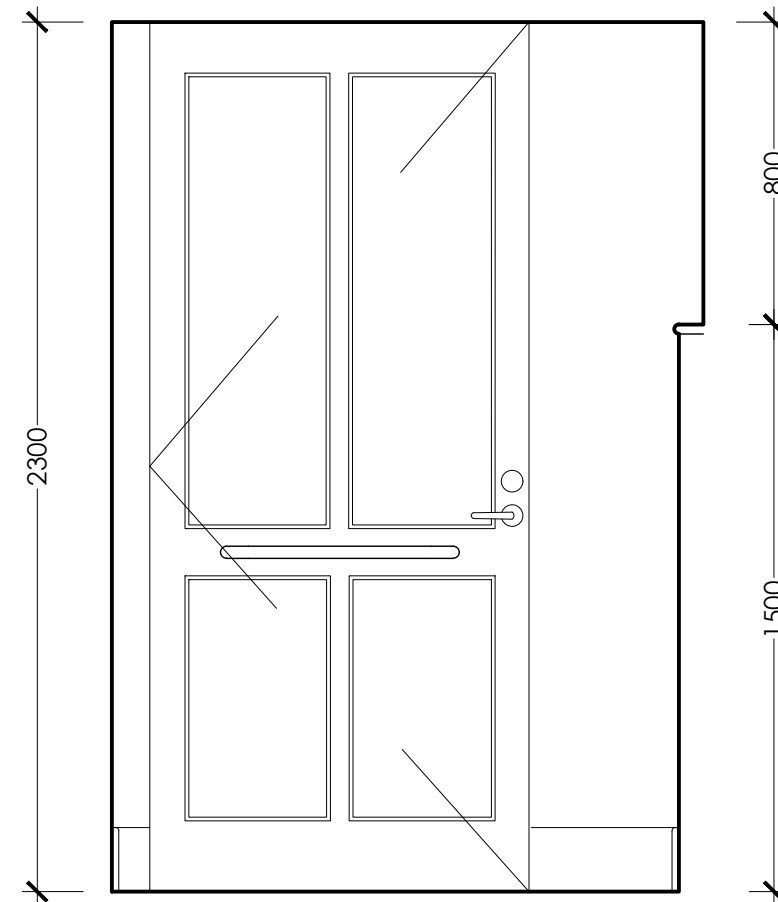


West Elevation 1:20

- 25mm oak top bull nosed finished with OSMO
- Dolphin Roseless doc M WC set Close coupled BC5063-CC
- 150mm bead and butt boarding painted
- 170mm high bull nosed skirting painted



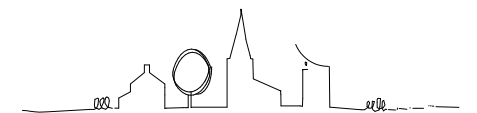
South Elevation 1:20



East Elevation 1:20

© This Drawing is the copyright of benjamin + beauchamp architects ltd.
 All dimensions to be checked on site by contractor and not scaled from this drawing.
 benjamin + beauchamp architects ltd accept no liability for any expense, loss or damage of whatsoever nature and however arising: from any variation made to this drawing; or in the execution of the work to which it relates, which has not been referred to them and their approval obtained.

P:\Lydiard Millicent - All Saints - 0771\Drawings, Photos & Graphics\B2 Drawings\Drawing Board\0771.WD.015 W.C Interior Elevations.dwg



Revision	Date	Initials	Notes
Project			

LYDIARD MILLICENT
 All Saints

W.C Interior Elevations

Stage
 FACULTY

O² benjamin + beauchamp
 architecture design conservation
 the borough studios, the borough,
 wedmore, somerset BS28 4EB
 T 01934 713313 F 01934 713314

Drawn By: MM Date: 29/08/22 Scale: 1:20 at A3
 Drawing No.: 0771.WD.016